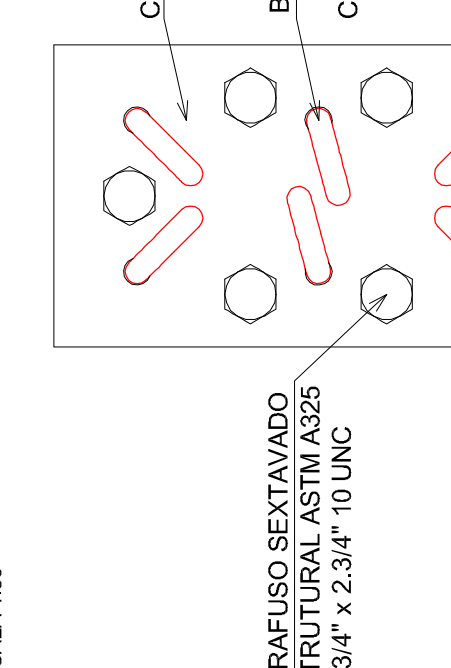


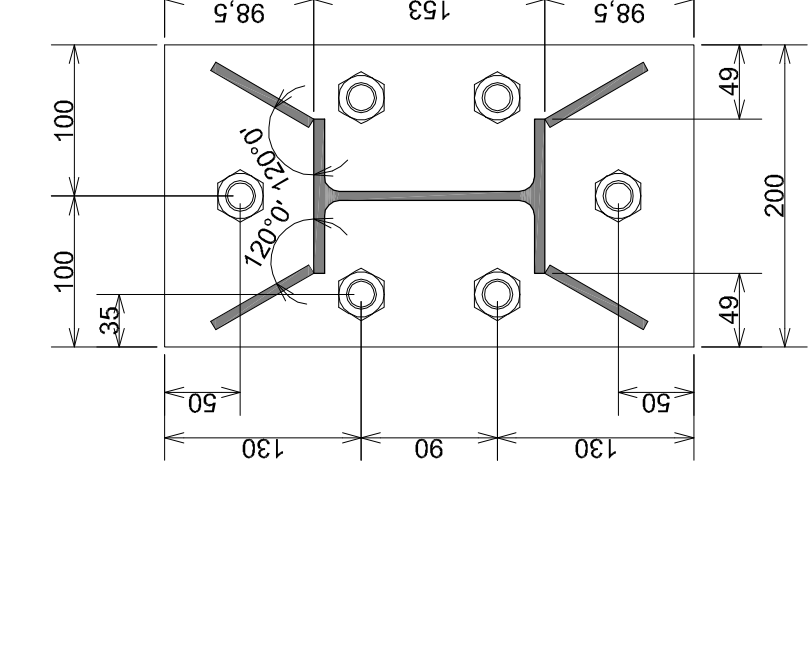
Technical drawing of a stepped shaft with the following dimensions and specifications:

- Top Section:** A tapered section with a total length of 150. The top diameter is 75. The material is labeled $\text{CN} \frac{1}{2}$.
- CR4 Section:** A cylindrical section with a length of 248 and a diameter of 48. The material is labeled $\text{CR4} \frac{1}{2}$.
- CR3 Section:** A cylindrical section with a length of 158 and a diameter of 47. The material is labeled $\text{CR3} \frac{1}{2}$.
- CR2 Section:** A cylindrical section with a length of 138 and a diameter of 47. The material is labeled $\text{CR2} \frac{1}{2}$.
- Bottom Section:** A cylindrical section with a length of 145.

E VIGAS DE COBERTURA
ESCALA 1-5



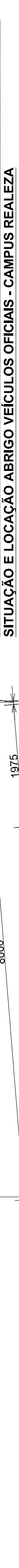
1



DETALHE INTELIGIÇÃO
ESCALA 1:5



PARAFUSO SEXTAVADO



AVENIDA EDMUNDO GAREISKI, Nº 1000, ACCESO RODÓVIA PR-182, km 456